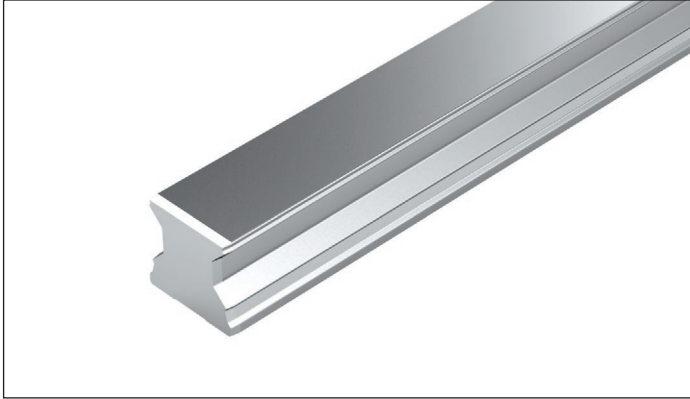


SNS for mounting from below R1807 .0. 3.



For mounting from below

Notes

- ▶ Observe the instruction for mounting!
- ▶ Please ask for the "Mounting Instructions for roller rail systems".
- ▶ Composite roller guide rail also available.

Material numbers

Size	Roller guide rail with size	Accuracy class					Number of sections		Hole spacing T (mm)	Recommended rail lengths	
		H	P	SP	GP	UP	One-piece	Composite		$L = n_B \cdot T - 4 \text{ mm}$	Maximum number of bore holes n_B
25	R1807 20	3	2	1	8	9	31,	3, ...	30.0		133
35	R1807 30	3	2	1	8	9	31,	3, ...	40.0		100
45	R1807 40	3	2	1	8	9	31,	3, ...	52.5		76
55	R1807 50	3	2	1	8	9	31,	3, ...	60.0		66
65	R1807 60	3	2	1	8	9	31,	3, ...	75.0		53

Ordering example 1

(up to L_{\max})

Options:

- ▶ Roller guide rail SNS
- ▶ Size 35
- ▶ Accuracy class P
- ▶ One-piece
- ▶ Rail length

$L = 1676 \text{ mm}$

Material number:

R1807 302 31, 1676 mm

Ordering example 2

(beyond L_{\max})

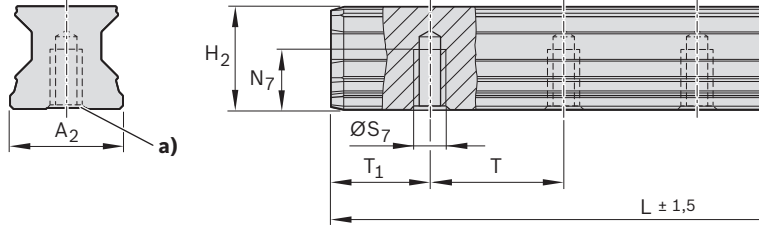
Options:

- ▶ Roller guide rail SNS
- ▶ Size 35
- ▶ Accuracy class P
- ▶ Multi-part (2 parts)
- ▶ Rail length

$L = 5036 \text{ mm}$

Material number:

R1807 302 32, 5036 mm



a) For roller guide rails of accuracy class H, this base area may be without a groove for manufacturing reasons.

Dimensions (mm)

Size	A_2	H_2	L_{max}	N_7	S_7	$T_{1\ min}$	$T_{1\ max}$	$T_{1\ S}^{1)}$	T	Mass (kg/m)
25	23	23.40	3986	12	M6	10	20.0	13.00	30.0	3.1
35	34	30.80	3996	15	M8	12	28.0	18.00	40.0	6.3
45	45	38.80	3986	19	M12	16	36.5	24.25	52.5	10.3
55	53	47.55	3956	22	M14	18	42.0	28.00	60.0	13.1
65	63	57.85	3971	25	M16	20	55.0	35.50	75.0	17.4

1) Preferred dimension $T_{1\ S}$ with tolerances ± 0.75